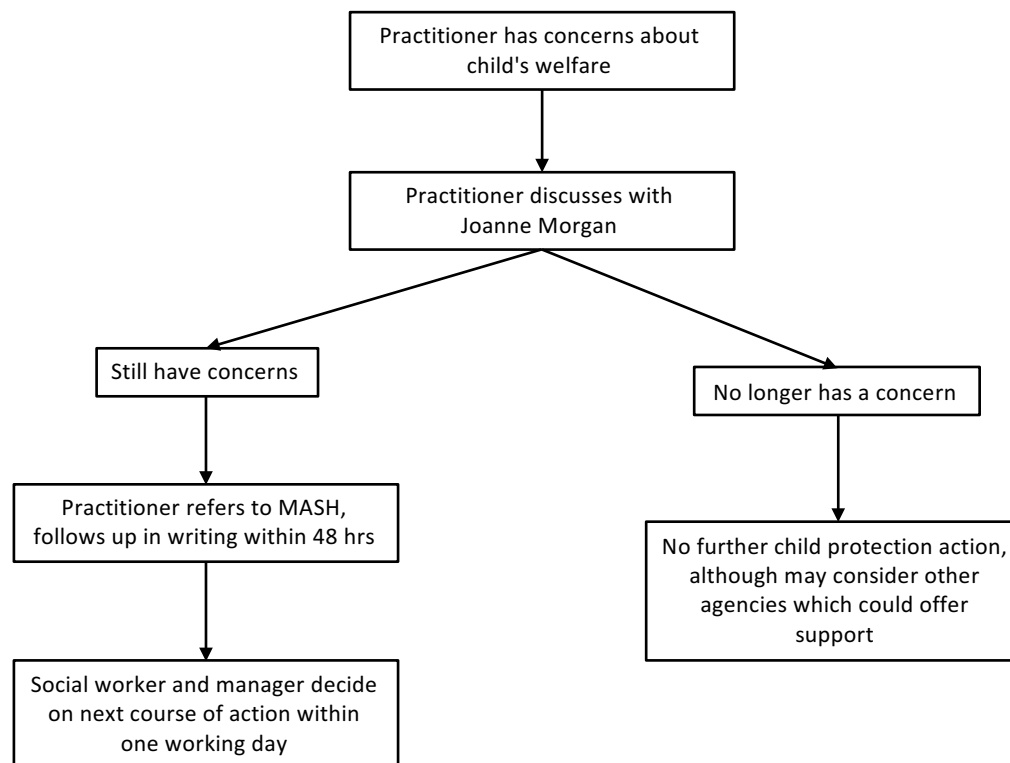




Appendix 1 Flow Chart

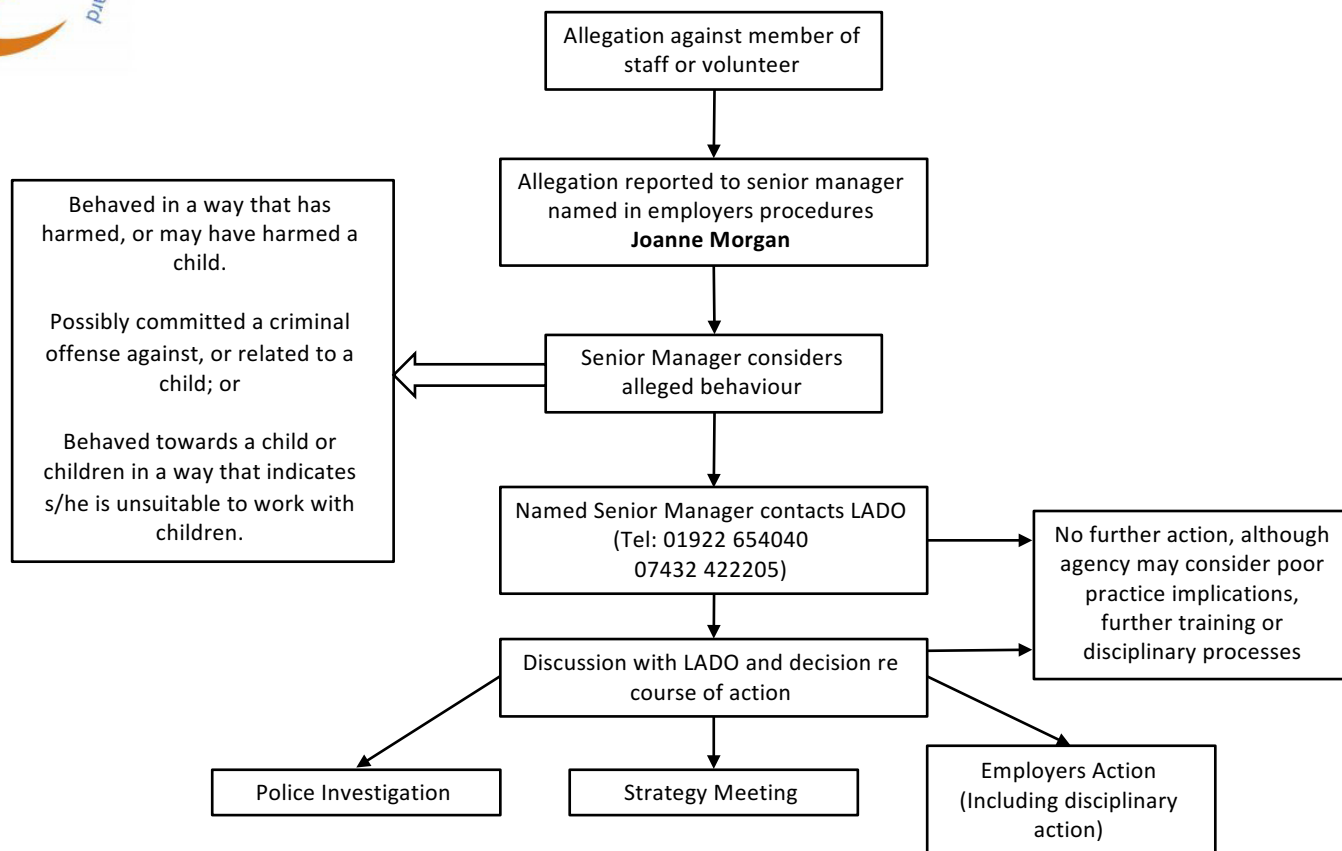
What to do if you have concerns that a child is being abused



MASH can be contacted on **0300 555 2866**
Email: mash@walsall.gcsx.gov.uk
8.45am – 5.15pm M-Th / F 8.45am – 4.45pm
Evenings, Bank Holidays (Out of Hours)
0300 555 2922 / 0300 555 2836
In an extreme emergency dial 999 for the Police.



Appendix 2 Managing Allegations Against Staff and Volunteers



Assessment by Children's Services e.g. s47 Child Protection Enquiry

LADO tracks progress, monitors outcomes and reports to LSCB and DCSF